



www.shearline.com

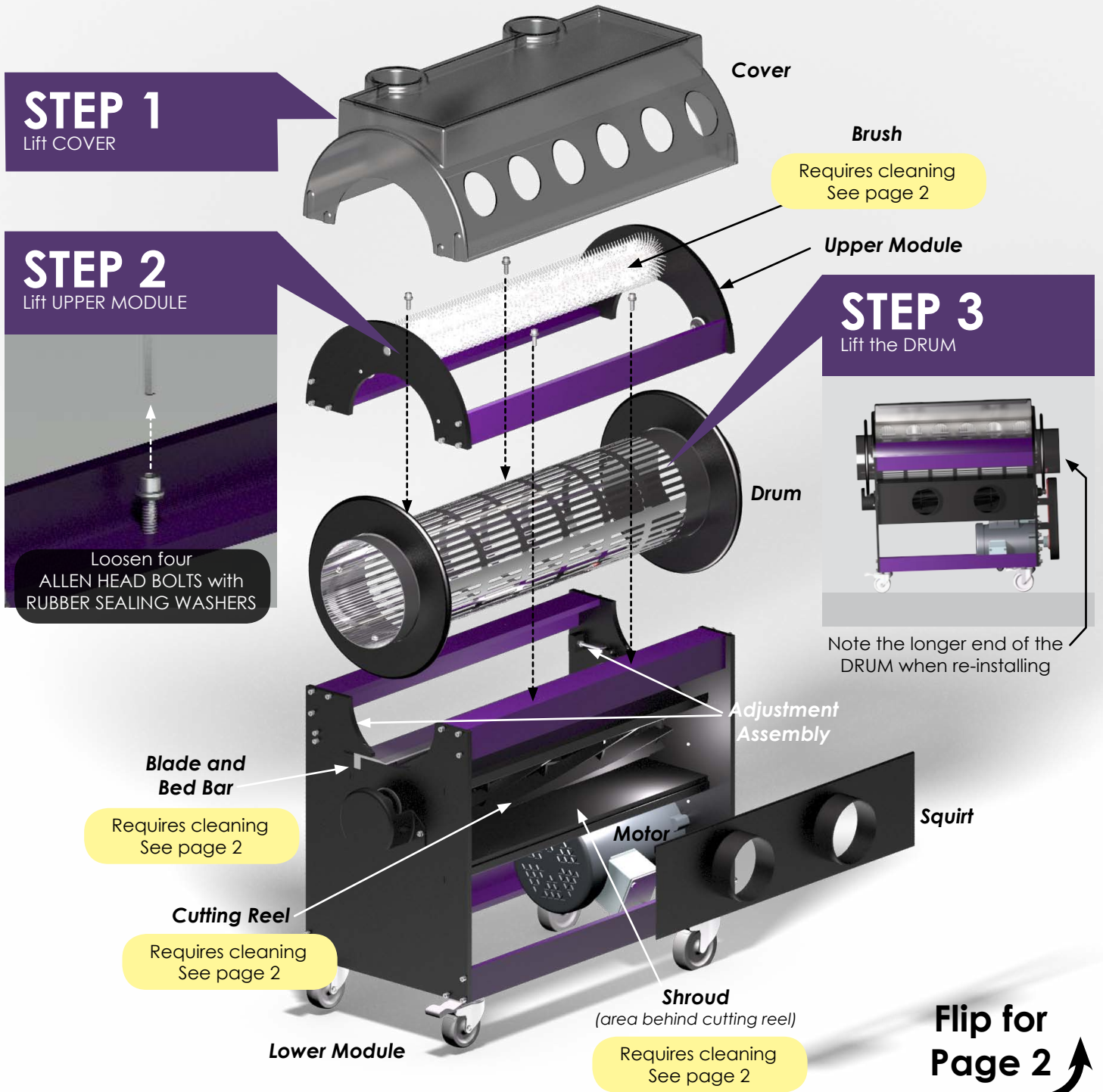
Tools Required

- 3/32" T-handle allen wrench
- 5/32" T-handle allen wrench
- 1/8" T-handle allen wrench
- 3/16" T-handle allen wrench



SHEARLINE™ ORIGINAL

⚠ 110V
Operate at 110V only!



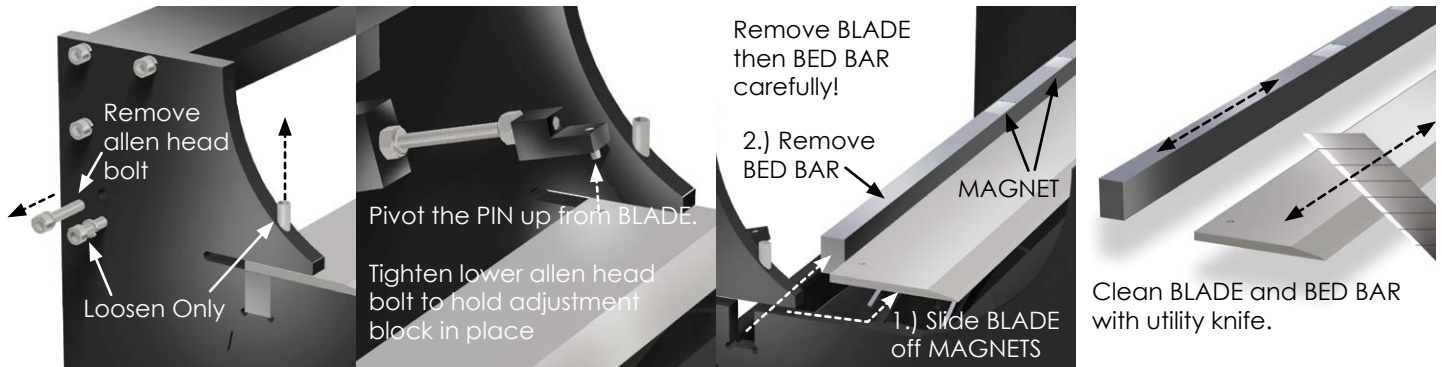
Get more in-depth instructions and manuals at www.Shearline.com

Flip for Page 2

BLADE REMOVAL & CLEANING

For optimal performance and life, the BLADE and BED BAR must be removed then cleaned every 2 hours of operation.

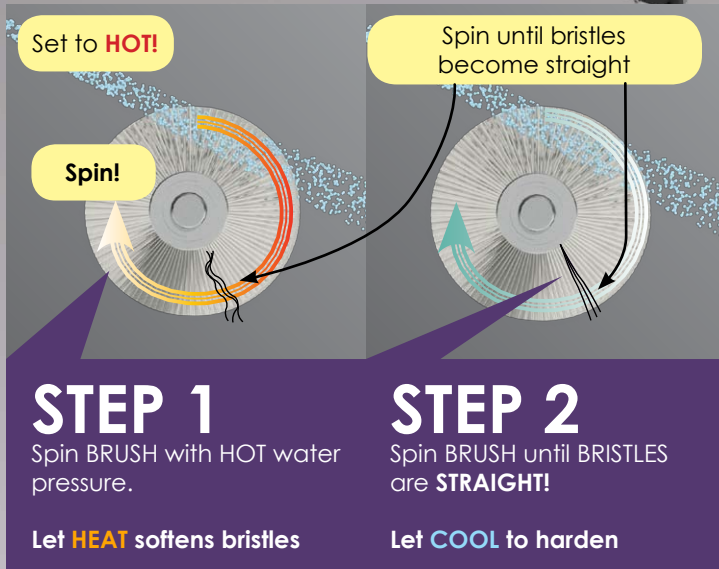
Watch the video instructions at www.Shearline.com



CLEANING

Clean the BRUSH using pressure-washer

The BRISTLES on the brush must be kept straight!



Set pressure-washer to

HOT! fan-spray

1500 - 2000 PSI

Brush

Clean the length of the CUTTING REEL and SHROUD of all debris

Cutting Reel

Shroud
(area behind cutting reel)

Bearing

Get more in-depth instructions and manuals at www.Shearline.com